



## Handrail & Tube Connectors

**Lockinex**<sup>®</sup>  
*great service, great quality*

## **INTRODUCTION**

Lockinex produce a range of Handrail & Tube connectors.

Included in these are galvanised industrial type, for use in applications, such as Water treatment works, Petro chemical sites, Factories, Warehouses etc.

For the more architectural, bespoke type handrails the Splice Lock, streamlined type are more suitable.

## **APPLICATION**

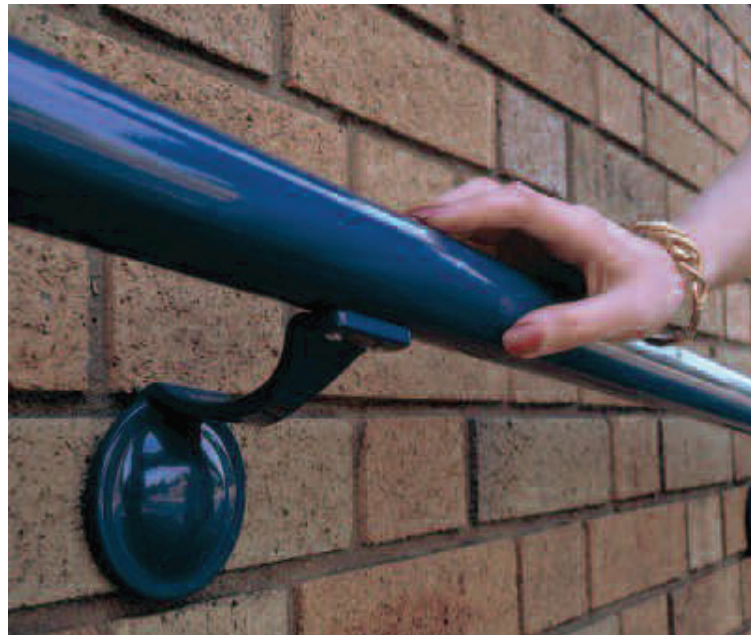
Used for the jointing of common sizes of tubing, primarily used for hand-railing & guard-railing applications.

## **DESIGN**

A number of designs/styles are available, to suit varying applications.

## **COMPOSITION, MANUFACTURE**

Manufactured from mild steel, with either a Bright Zinc plated coating or hot dipped galvanised.



# Splice Lock - Virtually unnoticeable tube joiners

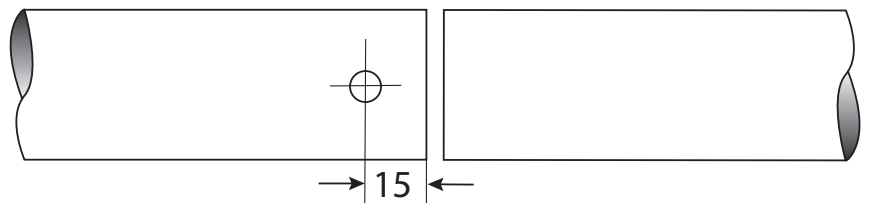
## Single screw Splice Lock - Zinc Plated



Tube dia	Code	To suit wall thickness
33.7mm	SL-6	2.6 - 4.0mm
42.4mm	SL-7	2.6 - 4.0mm
48.3mm	SL-8	2.6 - 4.0mm
60.3mm	SL-9	2.6 - 4.0mm

Length: 95mm Single screw type

Single screw - Drill a 10mm hole in one tube end



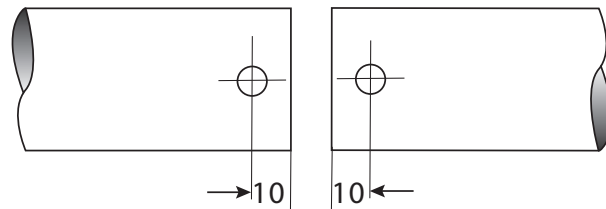
## Mini double screw splice lock-zinc plated



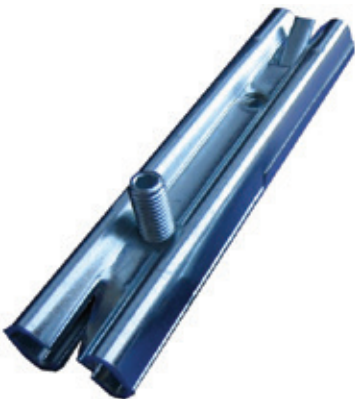
Tube Dia.	Code	To suit wall thickness
33.7mm	SL-6MD	2.6 - 4.0mm

Length: 95mm Mini double screw type

Mini double screw - Drill a 10mm hole in each tube end



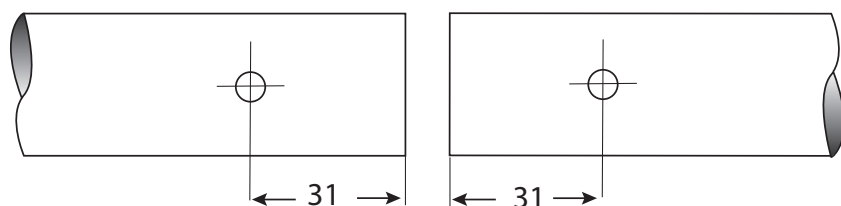
## Double screw Splice Lock - Zinc Plated



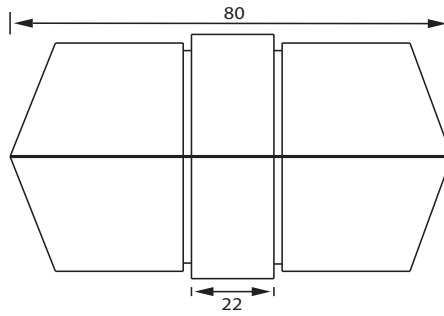
Tube Dia.	Code	To suit wall thickness
42.4mm	SL-7D	2.6 - 4.0mm
48.3mm	SL-8D	2.6 - 4.0mm
60.3mm	SL-9D	2.6 - 4.0mm

Length: 152mm Double screw type

Double screw - Drill a 10mm hole in each tube end

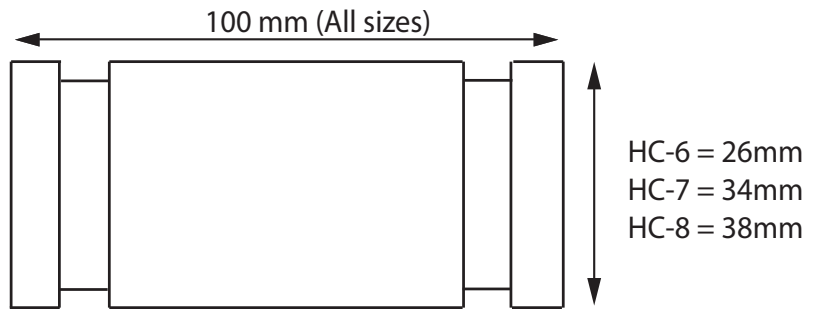


**A9/6 - To suit 33.7mm Dia tube**  
**A9/7 - To suit 42.4mm Dia tube**  
**A9/8 - To suit 48.3mm Dia tube**



Provides a streamline flush joint in the handrail tube. The central collar remains visible. Joints should be no further than 300mm from the nearest support. Not for joining tubes that are subject to extreme loads, or where a direct tensile load is applied. This product has a galvanised finish.

**HC-6 (To suit 33.7mm dia. tube)**  
**HC-7 (To suit 42.4mm dia. tube)**  
**HC-8 (To suit 48.3mm dia. tube)**



Straight connector for handrail. The two grooves can be used to locate user supplied grub screws or the tube and connector can be drilled through for the insertion of a \*bolted more permanent connection. Supplied with a galvanised finish.

\* When drilling through the tube and HC Connector, insert the bolt through and tighten nut. Ideal for joints that are under tensile load, and this systems prevents joints contracting over long distances of handrail



A9 Connector in use.

- HC-6 TX To suit 33.7mm Dia tube
- HC-7TX To suit 42.4mm Dia tube
- HC-8TX To suit 48.3mm Dia tube

