

# Roof Feet

Large area for load supporting frameworks on roofs & Floors.

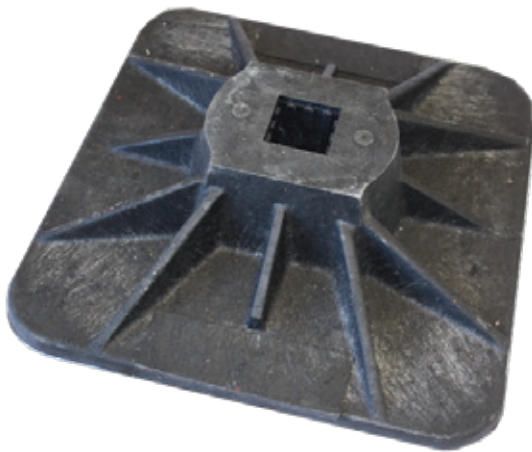
**Lockinex**<sup>®</sup>  
*great service, great quality*

## INTRODUCTION

Lockinex support feet have been designed to provide a stable and non penetrating load bearing base foot for roof support structures.

## APPLICATION

Positioned onto flat roofs, an optional rubber matt is also available for added protection of the roof membrane. Suitable frameworks can then be attached to the foot using the steel insert to make the connection. Ideal for supporting Air conditioning units, access ladders, step-overs (See the Lockinex range of step-overs available directly from stock).



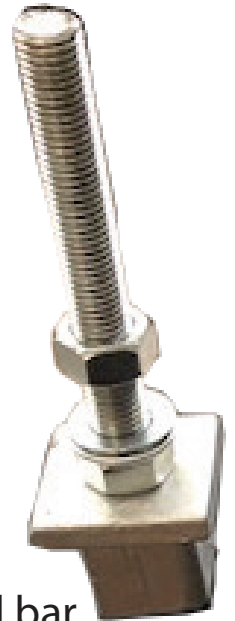
### **Giant-01**

350 x 350mm foot.  
Tested to in excess of 1000kg load. Recommended load 250kg

## COMPOSITION, MANUFACTURE.

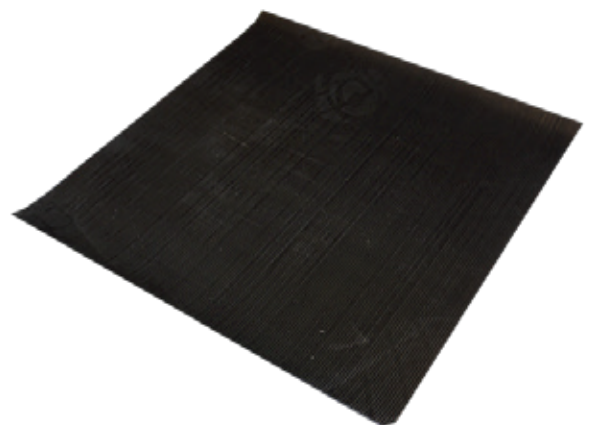
Giant-01  
Manufactured from recycled plastic.  
Giant -02  
Made from steel components  
Giant -03 Elastomer

All items are fully recyclable.



### **Giant-02**

Galvanised insert  
with M16 threaded bar



### **Giant-03**

430 x 430mm rubber  
mat.