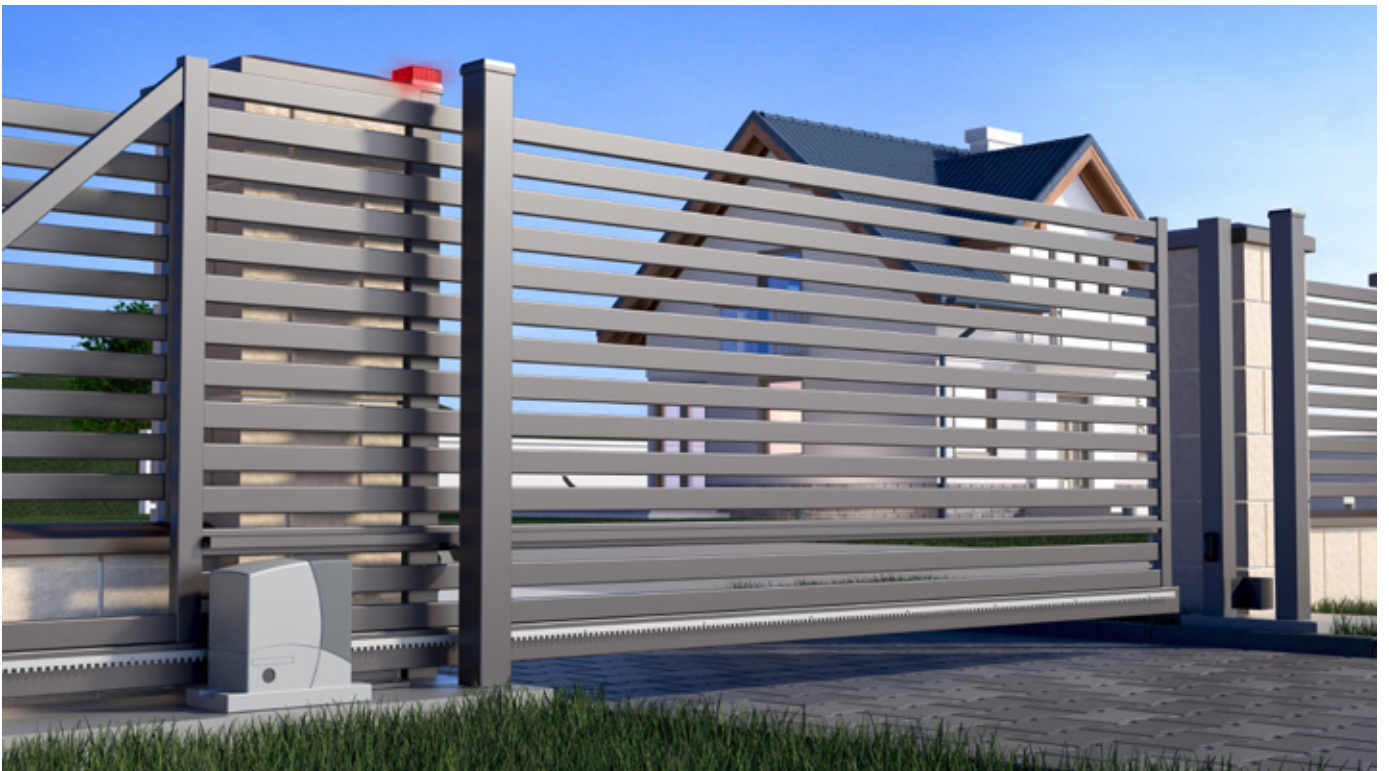


## Sliding Gate Hardware

For Cantilevered (Floating) & Tracked gates



Cantilevered (Floating) Gate Pictured, with Electric Radio controlled drive motor.

## INTRODUCTION

Sliding gate hardware is fixed to the chassis of the gate structure & to the ground support foundation. The various components allow for Cantilevered (Floating) Style or a Wheel & Track System. The option of an electric drive operator makes opening and closing effortless, using radio controlled key fobs/ Key Pad.

## APPLICATION

Ideal for Domestic and Industrial sites. The Cantilevered (Floating) gate has a very low noise level compared to a Wheel & Track system.

## DESIGN

The components are designed to perform for Light Gates, Medium & Heavy Industrial. Refer to the Load Tables to ascertain which products will suit the application.

## COMPOSITION, MANUFACTURE

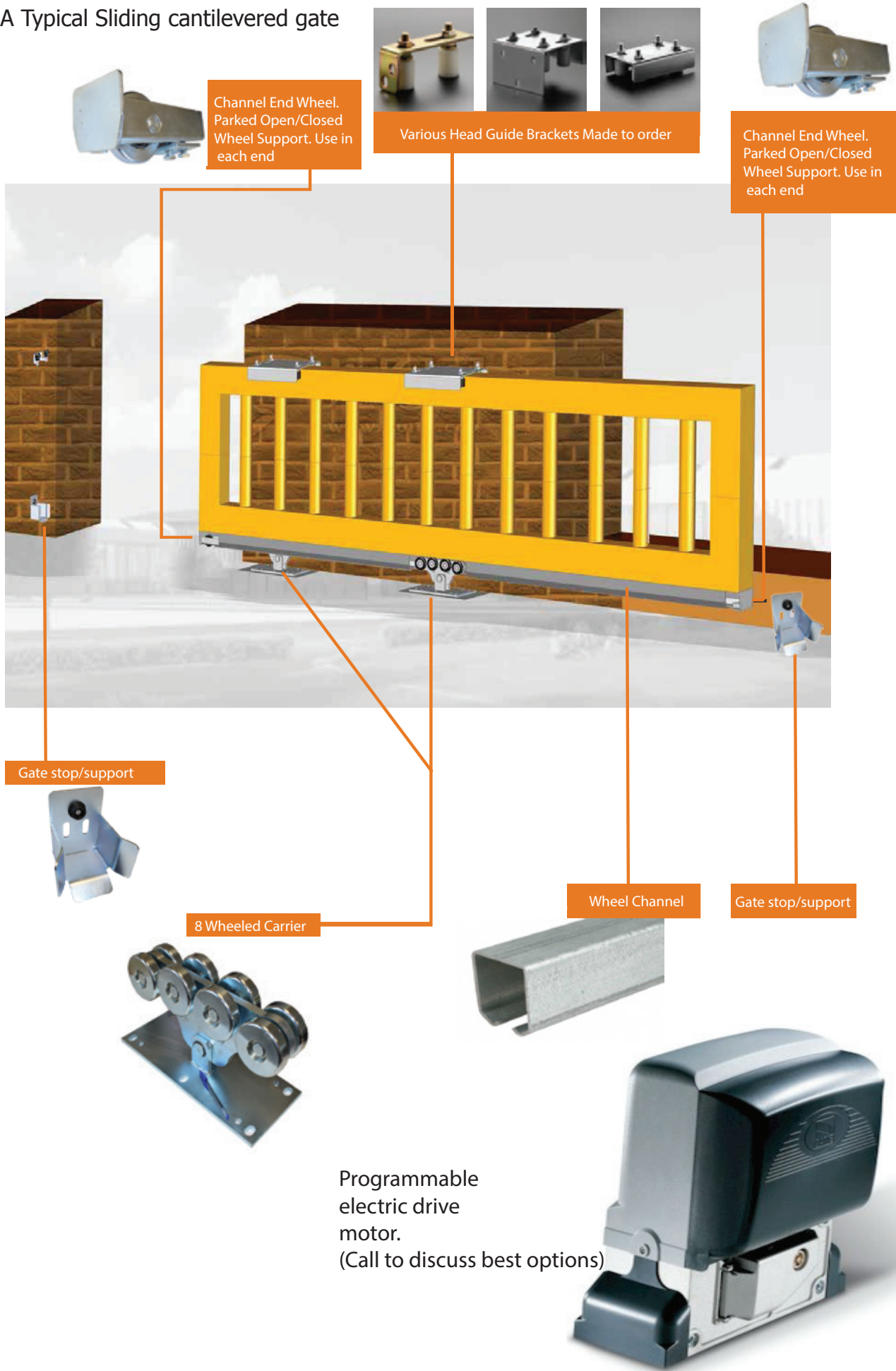
High quality components with double sealed bearings in all wheels, ensuring smooth & stable service life.



For full automation add drive track and drive motor.  
(See details for gate automation on the next page)



## A Typical Sliding cantilevered gate





## Gate Hardware to suit gates up to 500kg



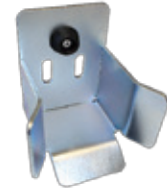
8 Wheeled Carrier.  
SLGHW-13  
Recommended Max Load of 500kg.  
Wheel dia = 50mm Nominal .



Wheel Channel.  
SLGHW-07  
3 mtr Length.



Channel End Wheel  
SLGHW-20



Gate Stop/Support  
SLGHW-26

## Gate Hardware to suit gates up to 1000kg



8 Wheeled Carrier.  
SLGHW-15  
Recommended Max load of 1000kg.  
Wheel Dia = 70mm Nominal .



Wheel Channel.  
SLGHW-09  
3mtr Length.



Channel End Wheel  
SLGHW-22



Gate Stop/Support  
SLGHW-28

## Gate Hardware to suit gates up to 1500kg



8 Wheeled Carrier.  
SLGHW-17  
Recommended Max load of 1500kg.  
Wheel Dia. = 110mm Nominal .



Wheel Channel.  
SLGHW-11  
3mtr Length.



Channel End Wheel  
SLGHW-24



Gate Stop/Support  
SLGHW-30

## Wheels & Tracks

All of the wheels shown are fitted with double bearings, producing a stable and free running wheel. All wheels are for use with Lockinex tracks, having a 20mm (Nominal) Running rail.



SLGHW-40 c/w 100mm dia. wheel.  
SLGHW-42 c/w 120mm dia. wheel.



SLGHW-50 c/w 100mm dia. wheel.  
SLGHW-52 c/w 120mm dia. wheel.



SLGHW-60 c/w 100mm dia. wheel.  
SLGHW-62 c/w 120mm dia. wheel.



SLGHW-01 c/w  
3mtr Length for fixing directly onto  
concrete.  
20mm dia. Raised running rail.



*Typical application*



SLGHW-03 c/w  
3mtr Length for setting into  
concrete.  
20mm dia. Raised running rail.



Drive Track for use with suitable  
Electric drive motor (Please call for  
recommendation & Prices)

SLGHW-70- 8mm thick x 30mm deep - 2mtr length c/w  
Suitable fixings for Welding/Bolting.  
Use with gates up to 500 kg

SLGHW-72- 12mm thick x 30mm deep - 2mtr length c/w  
Suitable fixings for Welding/Bolting.  
Use with gates up to 1000kg

SLGHW-74- 30mm thick x 30mm deep - 2mtr length c/w  
Suitable fixings for Welding/Bolting.  
Use for gates over 1500kg